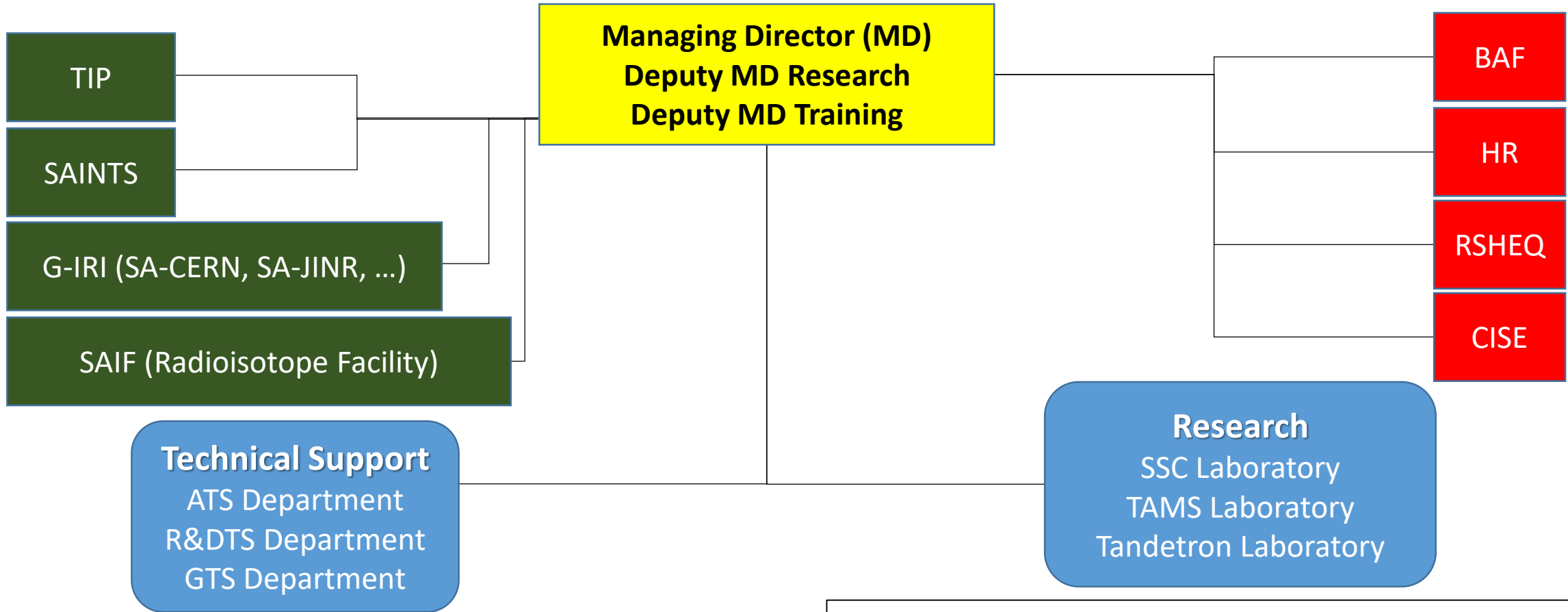


2021 Functional Diagram: Laboratories for Accelerator Based Science



ATS: Accelerator Operation and Technical Support
RDTS: Research and Development Technical Support
GTS: General Technical Support

SSC : Separated Sector Cyclotron
TAMS: Tandem and Accelerator Mass Spectrometer
TANDETRON: Tandetron

BAF: Business, Administration and Finance
CISE: Communication, Information and Science Engagement
RSHEQ: Radiation protection, Safety, Health, Environment and Quality
HR: Human Resources

SAINTS: Southern African Institute for Nuclear Technology and Science
SAIF: South African Isotope Facility
G-IRI: Gateway to International Research Infrastructure
TIP: Technology and Innovation Platform